

# Porcelain

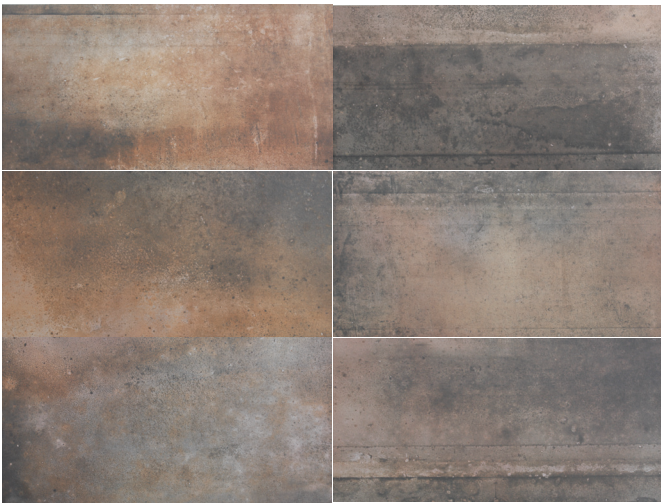
12" x 24"

## FERRO

Corroded metal surfaces, layers of paint, highlights of an old establishment with great heritage, providing consistent quality of service and products over decades. Spaces we'd like to start our day with or make it a part of our daily ritual. Ferro porcelain development concept was to capture a cross reference of this feeling in open floor spaces. Made in Emilia Romagna, Italy

### Stocking Colors + Sizes

FERRO Ruggine



12" x 24"

FERRO Grigio



12" x 24"

FERRO Marrone



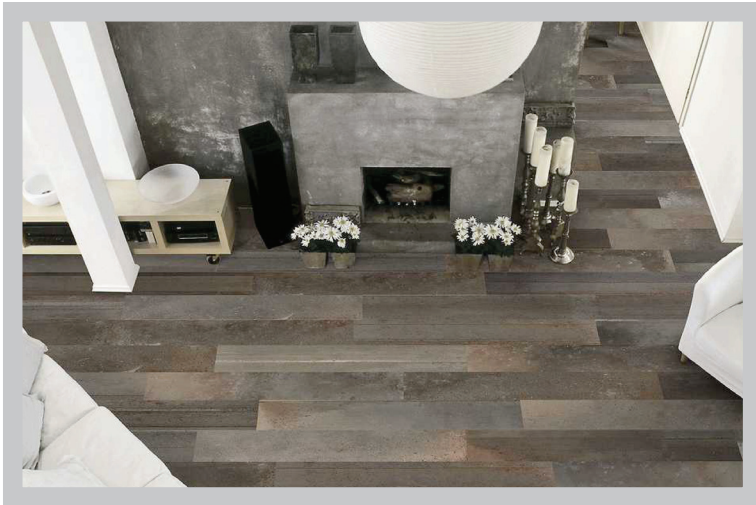
12" x 24"

2" x 2" Mosaics and 3" x 24" Surface Bullnose pieces are made to order with 8 to 12 days lead time

Packing: 8 EA (16SF) / Box, 40 Boxes/ pallet.  
Weight: 7.05LBS / EA, 56.40LBS / Box

All sizes are quoted nominal as an industry standard.

**Special Order Sizes** ( with 6-8 weeks lead time )  
24" x 24" , 6" x 36"



Variation: V4 - ( Moderate to High )

Installation: Manufacturer recommends on-set (stacked) pattern. If a staggered pattern is preferred, tile should overlap no more than 20%. Use a high bond, property thin set. Tiles are non-rectified. Allow a min. 1/16" grout joint.

Application: Suitable for residential and commercial use.

Care: When necessary, use non abrasive, neutral detergent diluted with water.

Water Absorbtion:	ISO 10545/3	≤ 0,08 %
Flextural Resistance:	ISO 10545/4	R > 48.2 N/mm2
Abrasion Resistance:	ISO 10545/6	142 mm3
CoF:	ANSI A137.1:2012, Wet,	0,56

[www.agorasurfaces.com](http://www.agorasurfaces.com)

All images are for reference only and may not match physical product exactly. All product specifications are supplied by the manufacturer and are subject to change by the manufacturer without notice to you or to Agora Natural Surfaces, Inc. Agora makes no representations or warranties as to the specifications of any product.